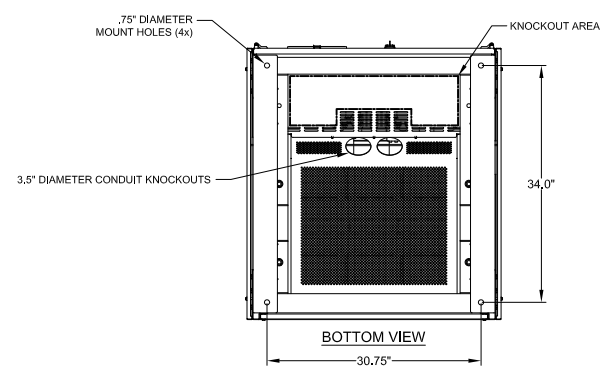
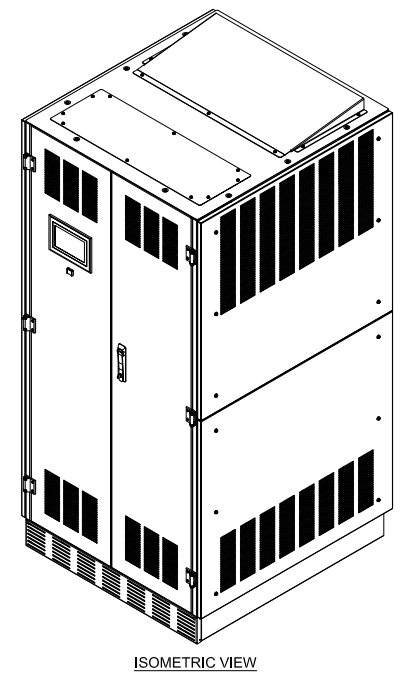
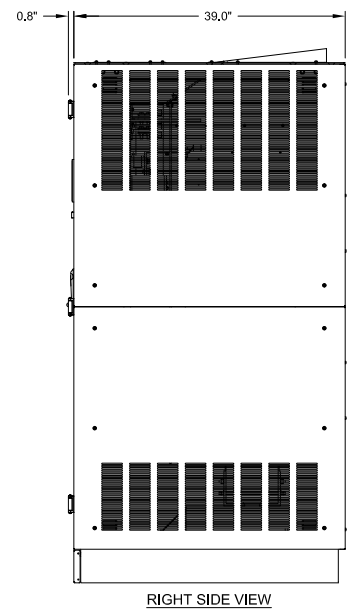
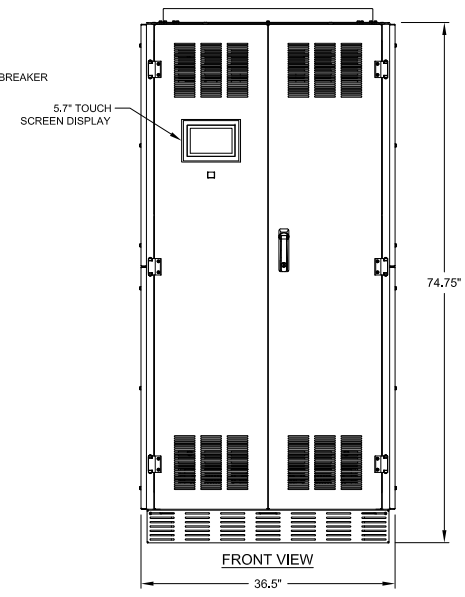
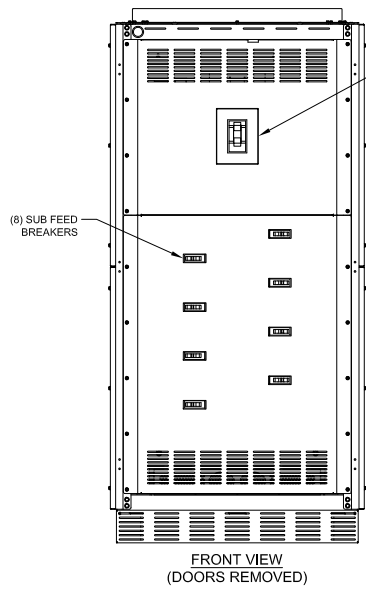
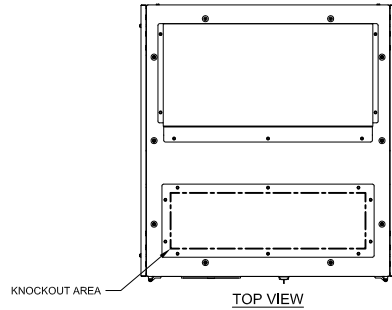


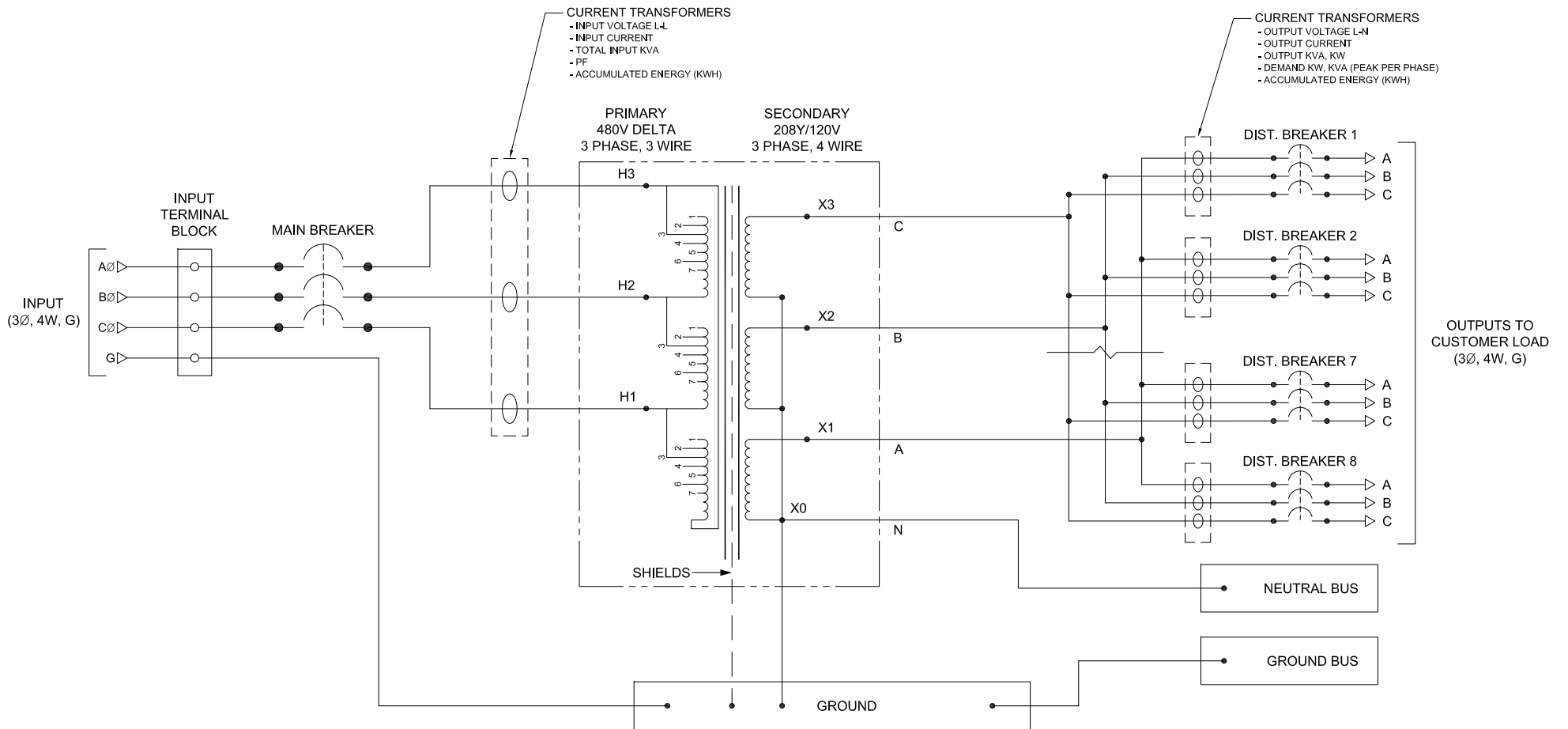
NOTES:

1. 75KVA-300KVA 480D-208Y/120V 60HZ DOUBLE SHIELD, K20, TP1 TRANSFORMER.
2. BOTTOM MAIN FEED AND SUB FEEDS.
3. HEAVY GAUGE WELDED STEEL BASE.
4. DURABLE CHIP AND CORROSION RESISTANT POWDER COAT FINISH.
5. REMOVABLE VENTED SKIRT PLATES FOR FRONT PALLET JACK ACCESS.
6. MINIMUM OF 36" OF CLEARANCE REQUIRED ON THE FRONT AND LEFT SIDE OF THE ENCLOSURE.
7. 4" CLEARANCE REQUIRED ON THE RIGHT AND REAR OF THE UNIT FOR PROPER COOLING.



75KVA - 300KVA POWER DISTRIBUTION UNIT			
BASE MECHANICAL DRAWING			
THE INFORMATION CONTAINED IN THIS DRAWING IS THE SOLE PROPERTY OF C&C POWER, INC. ANY REPRODUCTION WITHOUT THE WRITTEN CONSENT OF C&C POWER, INC IS PROHIBITED.			
DIMENSIONS ARE IN INCHES		INITIALS	DATE
TOLERANCES:		DRAWN	PJC
DECIMALS: .XX ±.13	ANGLES: ±1°	CHECKED	JRL
.XXX ±.082			10/19/2015
SCALE: NTS	SIZE: A	REV: 3	SHEET 1 OF 2
			C&C POWER ENGINEERED POWER PRODUCTS WWW.CCPower.COM © 2015 C&C POWER, INC. ALL RIGHTS RESERVED

DRAWING #: 9900 SD01-1 REV 3



75 KVA - 300 KVA POWER DISTRIBUTION UNIT
ELECTRICAL DIAGRAM

THE INFORMATION CONTAINED IN THIS DRAWING IS THE SOLE PROPERTY OF C&C POWER, INC. ANY REPRODUCTION WITHOUT THE WRITTEN CONSENT OF C&C POWER, INC IS PROHIBITED.

DIMENSIONS ARE IN INCHES		INITIALS	DATE
TOLERANCES:		DRAWN	PJC
DECIMALS: .XX ±.13	ANGLES: ±1°	CHECKED	JRL
.XXX ±.082			10/19/2015
SCALE: NTS	SIZE: A	REV: 2	SHEET 2 OF 2

C&C POWER
ENGINEERED POWER PRODUCTS
WWW.CCPOWER.COM

© 2015 C&C POWER, INC.
ALL RIGHTS RESERVED