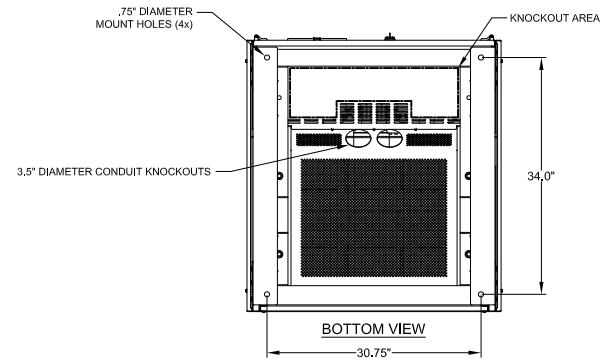
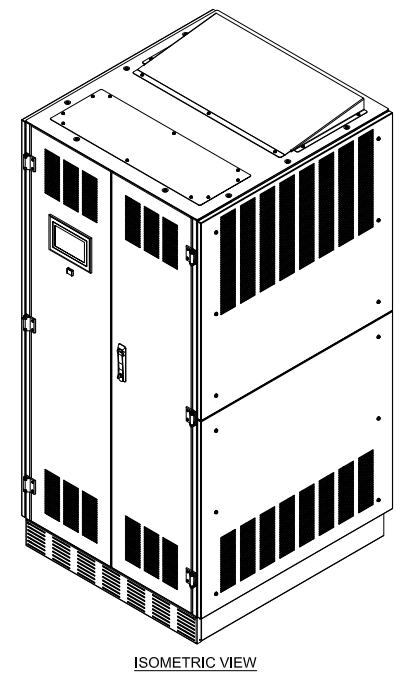
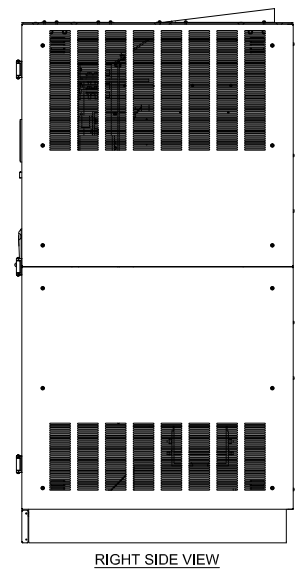
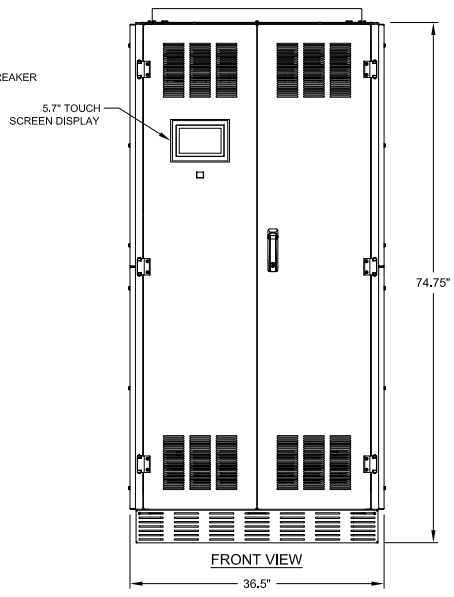
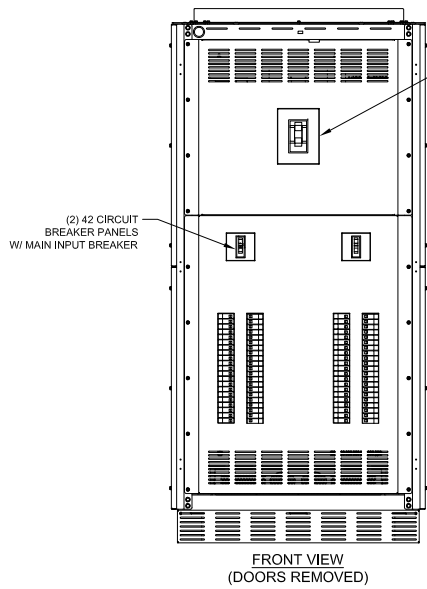
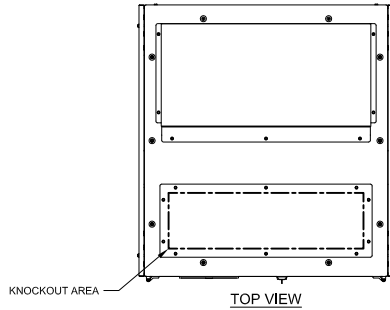


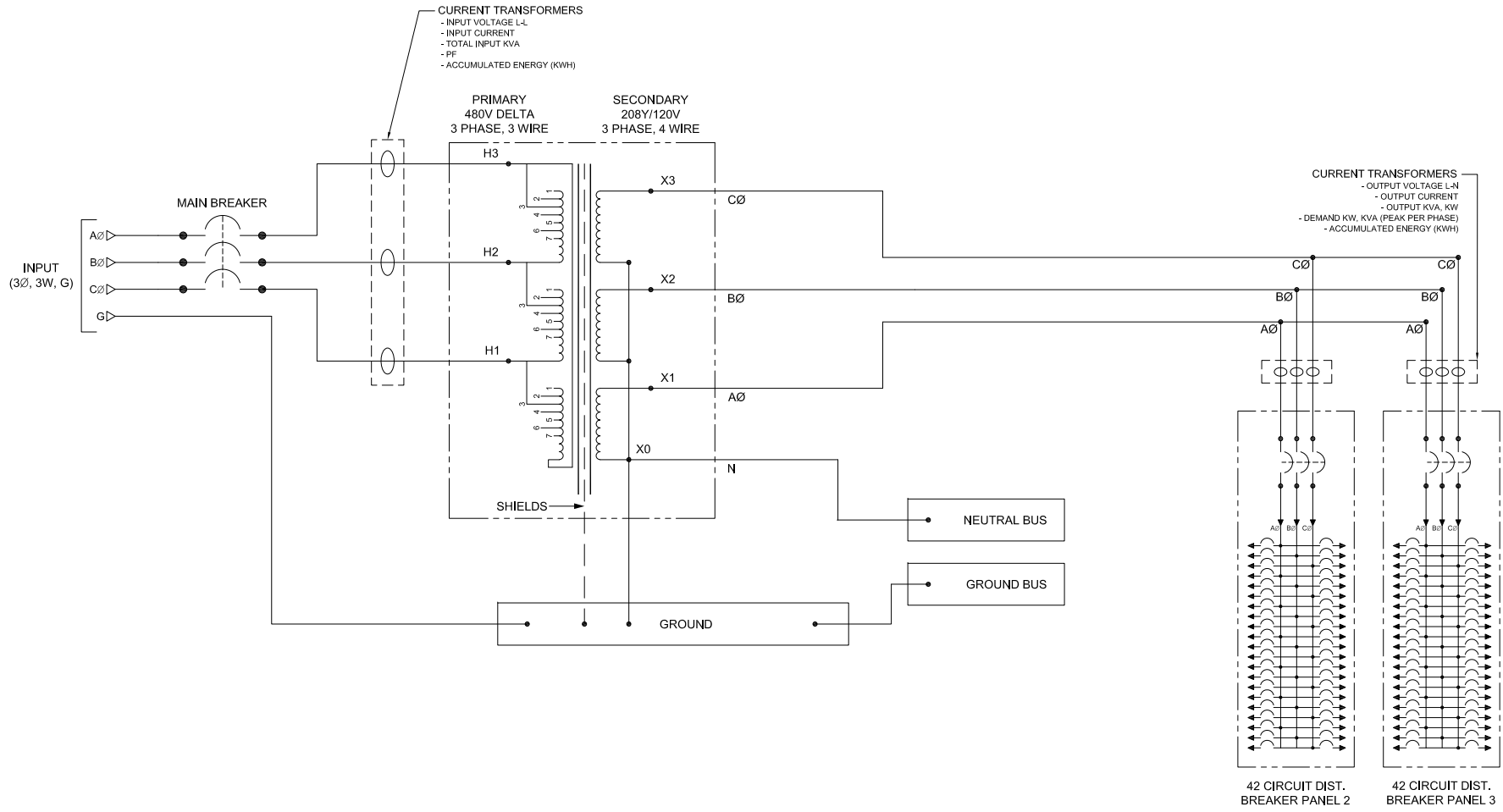
NOTES:

1. 75KVA-300KVA TRANSFORMER.
2. BOTTOM MAIN FEED AND SUB FEEDS.
3. HEAVY GAUGE WELDED STEEL BASE.
4. DURABLE CHIP AND CORROSION RESISTANT POWDER COAT FINISH.
5. REMOVABLE VENTED SKIRT PLATES FOR FRONT PALLET JACK ACCESS.
6. MINIMUM OF 36" OF CLEARANCE REQUIRED ON THE FRONT AND LEFT SIDE OF THE ENCLOSURE FOR OPERATION AND MAINTENANCE.
7. A MINIMUM REAR CLEARANCE OF 6" IS REQUIRED FOR OPTIMAL COOLING OF THE EQUIPMENT.
8. NO CLEARANCE RESTRICTIONS ON THE RIGHT SIDE OF THE ENCLOSURE.



75 KVA - 300 KVA POWER DISTRIBUTION UNIT			
BASE MECHANICAL DRAWING			
THE INFORMATION CONTAINED IN THIS DRAWING IS THE SOLE PROPERTY OF C&C POWER, INC. ANY REPRODUCTION WITHOUT THE WRITTEN CONSENT OF C&C POWER, INC IS PROHIBITED.		C&C POWER ENGINEERED POWER PRODUCTS WWW.CCPower.COM	
DIMENSIONS ARE IN INCHES	INITIALS	DATE	
TOLERANCES:	DRAWN PJC	10/22/2015	
DECIMALS: .XX ±.13	CHECKED JRL	10/22/2015	
ANGLES: .XXX ±.082			
SCALE: NTS	SIZE: A	REV: 4	SHEET 1 OF 2
		© 2016 C&C POWER, INC. ALL RIGHTS RESERVED	

DRAWING #: 9900 SD02-1 REV 4



75 KVA - 300 KVA POWER DISTRIBUTION UNIT
ELECTRICAL DIAGRAM

THE INFORMATION CONTAINED IN THIS DRAWING IS THE SOLE PROPERTY OF C&C POWER, INC. ANY REPRODUCTION WITHOUT THE WRITTEN CONSENT OF C&C POWER, INC IS PROHIBITED.

DIMENSIONS ARE IN INCHES	INITIALS	DATE
TOLERANCES:	DRAWN PJC	9/30/2015
DECIMALS: .XX ±.13	CHECKED JRL	9/30/2015
ANGLES: ±1°		
.XXX ±.082		

SCALE: SIZE: A REV: 2 SHEET 2 OF 2

C&C POWER
ENGINEERED POWER PRODUCTS
 WWW.CCPOWER.COM

© 2015 C&C POWER, INC.
 ALL RIGHTS RESERVED

DRAWING #: 9900 SDC2-2 REV 2