

RPP - Remote Power Panel

Intelligent Datacenter RPP

C&CPower's full line of Remote Power Panels (RPP) provides a wide range of options for any datacenter requirement. We understand the need to have a flexible and reliable system that can still be able to deployed to the field quickly. To fill that need, we have designed an adaptable modular system that allows us to cost-effectively build a wide range of solutions in a short amount of time.

These RPPs are ideal for any load distribution scenario with systems ranging from 42-circuits with no monitoring all the way to 168-circuits with revenue grade monitoring on each circuit.



Optional polycarbonate viewing window shown



STANDARD FEATURES:

- ▶ Up to 168 branch circuit positions
- ▶ Front access design
- ▶ Designed for easy top and bottom wiring access
- ▶ No side clearance required
- ▶ Fanless, convection cooled design
- ▶ Solid door with venting and lockable latch
- ▶ Single input per panelboard
- ▶ Multiple panelboard manufacturers available
- ▶ Fast deliveries on standard models
- ▶ Listed to UL 60950

	Subcompact Depth	Compact Depth	Server Rack Depth
Dimensions	24.0"W x 12.0"D x 84.0"H	24.0"W x 24.0"D x 84.0"H	24.0"W x 42.0"D x 84.0"H
Input	208 VAC, three-phase, 4-wire plus ground ¹		
Output	208 VAC, three-phase, 4-wire plus ground ¹		
Panelboards ²	Up to (2) - 225A/400A	Up to (4) 225A/400A ³	Up to (4) 225A/400A ³

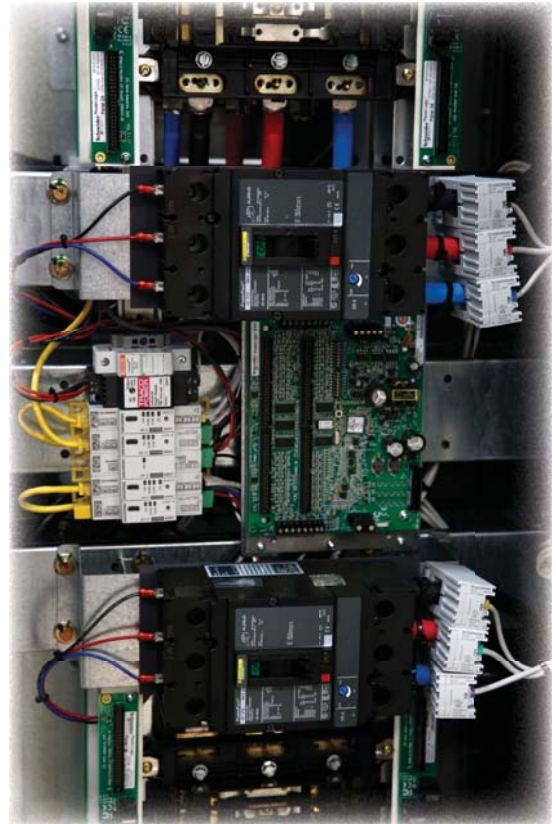
¹ Additional input/output voltages available

² Square D, Siemens, Cutler Hammer, GE, ABB

³ (2) Panelboards front facing (2) Panelboards rear facing

OPTIONAL FEATURES:

- Input monitoring
- Branch circuit monitoring
- Common input for multiple panelboards
- TVSS up to 200 kA
- Seismic rated floor stand
- Polycarbonate viewing window
- Perforated server cabinet door
- Isolated ground bus
- Input cable whips for easy raised floor installs



MAIN MONITORING FEATURES:

- IP65 display with 10-key user interface
- Input voltage - Class 0.2
- Input Current - .5% accuracy
- Modbus RS485 / RTU communication
- Modbus TCP communication

BRANCH CIRCUIT MONITORING FEATURES:

- System - 1% accuracy
- Output Current - .5% accuracy
- 100A solid core CTs
- 1.8 second sample rate
- Modbus RS485 / RTU communication