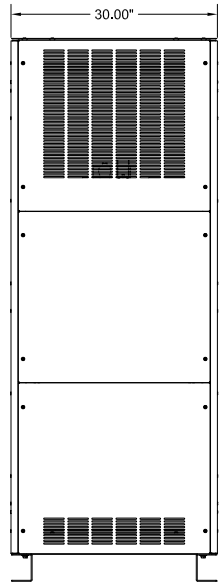
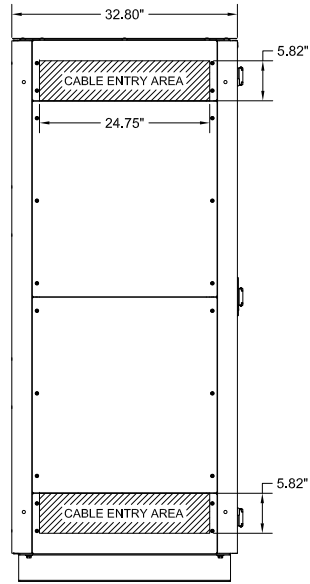


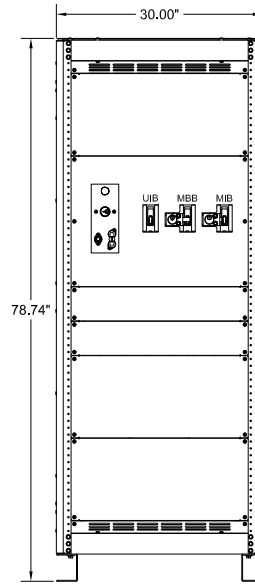
TOP VIEW



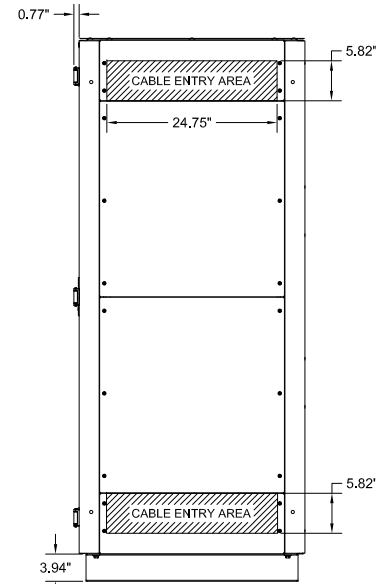
REAR VIEW



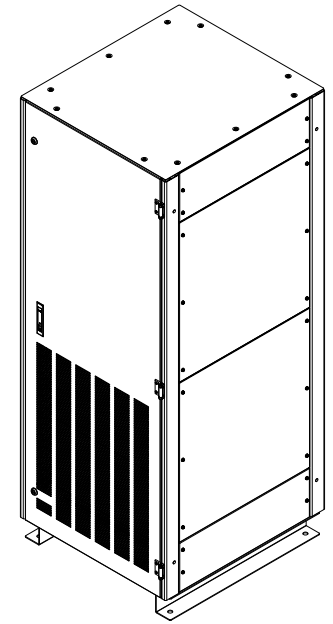
LEFT SIDE VIEW



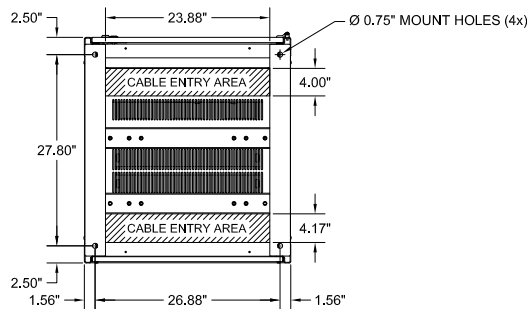
FRONT VIEW  
(DOOR REMOVED)



RIGHT SIDE VIEW



ISOMETRIC VIEW



BOTTOM VIEW

NOTES:

1. APPROXIMATE WEIGHT: 1200 LBS.
2. ASSEMBLY IS UL/CUL LISTED TO UL 891 AND C22.2 NO. 244.
3. THE CABINET IS CONSTRUCTED FROM GALVANIZED STEEL.
4. THE CABINET IS TO BE MOUNTED THROUGH THE 0.750" HOLES IN THE CABINET LEGS. THE LEGS ARE FORMED FROM 10 GAUGE STEEL.
5. FINISH IS POWDER COAT ON ALL EXTERNAL AND VISIBLE SURFACES, INTERIOR PANELS AND MOUNT BRACKETS ARE GALVANIZED FINISH.
6. CABINET LEGS ARE REVERSIBLE FOR EASY ACCESS TO CABINET FLOOR MOUNTING HARDWARE.
7. A MINIMUM REAR CLEARANCE OF 6" IS REQUIRED FOR OPTIMAL COOLING OF THE EQUIPMENT.

90845 SERIES MAINTENANCE BYPASS CABINET WITH TRANSFORMER			
100KVA 3 BREAKER BYPASS WITH SKRU			
480D-208Y/120V OUTPUT TRANSFORMER			
THE INFORMATION CONTAINED IN THIS DRAWING IS THE SOLE PROPERTY OF C&C POWER, INC. ANY REPRODUCTION WITHOUT THE WRITTEN CONSENT OF C&C POWER, INC IS PROHIBITED.		INITIALS	DATE
DRAWN	ABB	5/2/2019	
CHECKED	ABB	5/2/2019	
SCALE: NTS	SZE: A	REV: 1	SHEET 1 OF 2

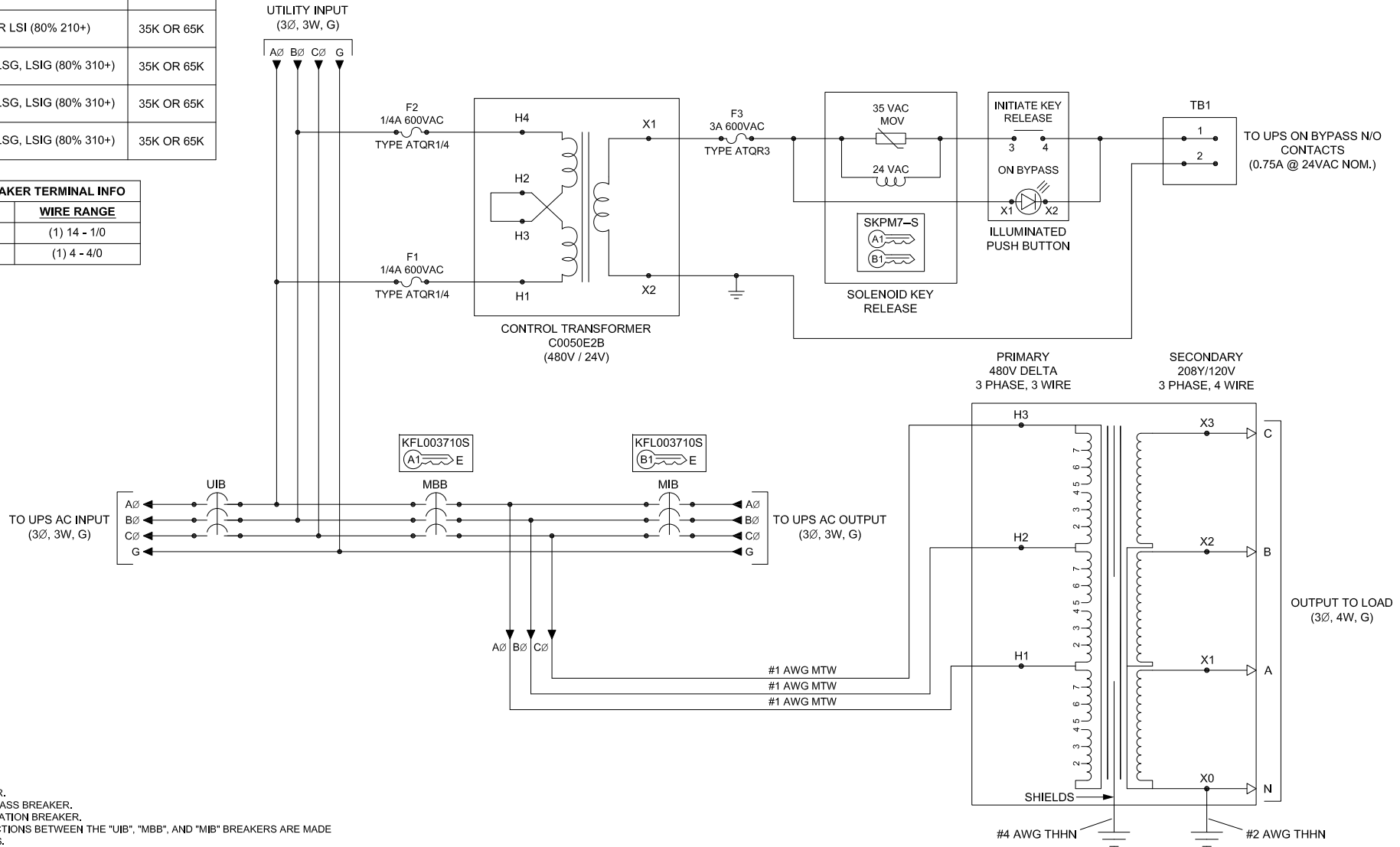
**C&C POWER**  
ENGINEERED POWER PRODUCTS  
WWW.CCPower.COM

© 2019 C&C POWER, INC.  
ALL RIGHTS RESERVED

CIRCUIT BREAKER OPTIONS		
TRIP SIZE	TRIP TYPE	AIC @ 480
15-150A	TMAG (80%)	14K OR 65K
175-225A	TMAG (80%)	35K OR 65K
40-100A (ADJUSTABLE)	LI OR LSI (80% 210+)	35K OR 65K
70-150A (ADJUSTABLE)	LI OR LSI (80% 210+)	35K OR 65K
100-225A (ADJUSTABLE)	LI OR LSI (80% 210+)	35K OR 65K
15-80A (ADJUSTABLE)	LS, LSI, LSG, LSIG (80% 310+)	35K OR 65K
60-160A (ADJUSTABLE)	LS, LSI, LSG, LSIG (80% 310+)	35K OR 65K
100-225A (ADJUSTABLE)	LS, LSI, LSG, LSIG (80% 310+)	35K OR 65K

CIRCUIT BREAKER TERMINAL INFO	
TRIP SIZE	WIRE RANGE
15-100A	(1) 14 - 1/0
110-225A	(1) 4 - 4/0

TRANSFORMER RATINGS								
KVA	PRIMARY VOLTAGE	SECONDARY VOLTAGE	FREQUENCY	MATERIAL	TEMP RISE	K FACTOR	%IZ	EFFICIENCY
100	480	208Y/120	60 HZ	CU	150°C	K13	3.8	DOE-2016



**NOTES:**

- "UIB" UPS INPUT BREAKER.
- "MBB" MAINTENANCE BYPASS BREAKER.
- "MIB" MAINTENANCE ISOLATION BREAKER.
- ALL ELECTRICAL CONNECTIONS BETWEEN THE "UIB", "MBB", AND "MIB" BREAKERS ARE MADE USING COPPER BUS BARS.
- GROUND LUG ACCEPTS (4) #6 - 350 MCM CABLES.
- TRANSFORMER IS SUPPLIED WITH REMOVABLE MECHANICAL LUGS ON THE X1, X2, AND X3 OUTPUT THAT ACCEPT (1) 2AWG-600MCM CABLES.
- TRANSFORMER IS SUPPLIED WITH REMOVABLE MECHANICAL LUGS ON THE X0 OUTPUT THAT ACCEPT (2) 2AWG-600MCM CABLES.
- VOLTAGE BETWEEN THE AØ AND BØ MUST BE 480V±10% FOR THE SKRU CIRCUIT TO FUNCTION PROPERLY.
- THIS DRAWING IS TO BE USED FOR ELECTRICAL PURPOSES ONLY AND DOES NOT REPRESENT THE ACTUAL MECHANICAL LAYOUT OF THE EQUIPMENT.

**KIRK KEY NOTES:**

- THE "E" OR "W" NEXT TO THE INTERLOCK INDICATES THE POSITION OF THE INTERLOCK BOLT WHEN THE KEY IS REMOVABLE. "E" = EXTENDED AND "W" = WITHDRAWN.
- THE KEY OR KEYS NEXT TO THE INTERLOCK INDICATES THE KEY NUMBER THAT FUNCTIONS WITH THE INTERLOCK.

90845 SERIES MAINTENANCE BYPASS CABINET WITH TRANSFORMER			
100KVA 3 BREAKER BYPASS WITH SKRU			
480D-208Y/120V OUTPUT TRANSFORMER			
THE INFORMATION CONTAINED IN THIS DRAWING IS THE SOLE PROPERTY OF C&C POWER, INC. ANY REPRODUCTION WITHOUT THE WRITTEN CONSENT OF C&C POWER, INC IS PROHIBITED.			
DIMENSIONS ARE IN INCHES	INITIALS	DATE	
TOLERANCES:	DRAWN	5/2/2019	
DECIMALS: .XX ±.13	ABB		
ANGLES: ±1"	CHECKED	5/2/2019	
.XXX ±.082	ABB		
SCALE: SEE A	REV: 1	SHEET 2 OF 2	

**C&C POWER**  
**ENGINEERED POWER PRODUCTS**  
 WWW.CCPower.COM  
 © 2019 C&C POWER, INC.  
 ALL RIGHTS RESERVED