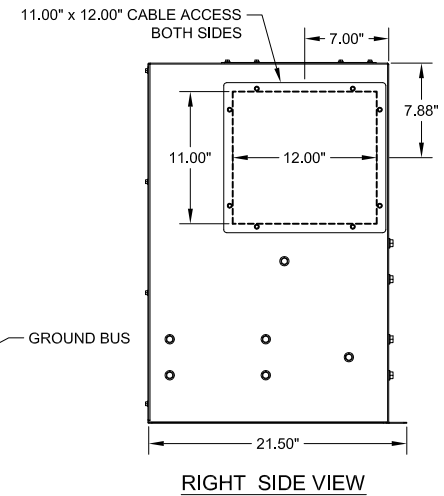
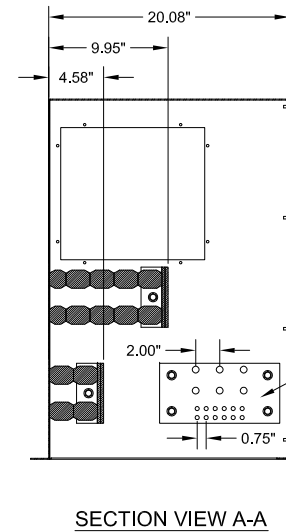
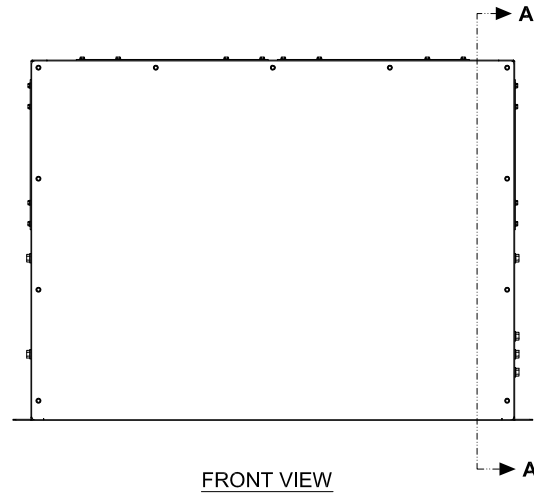
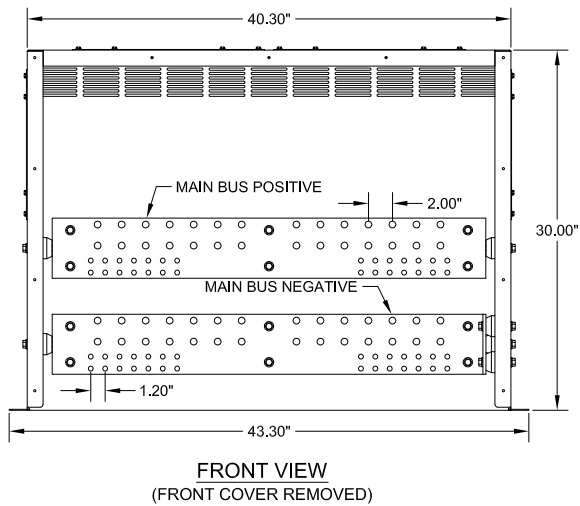
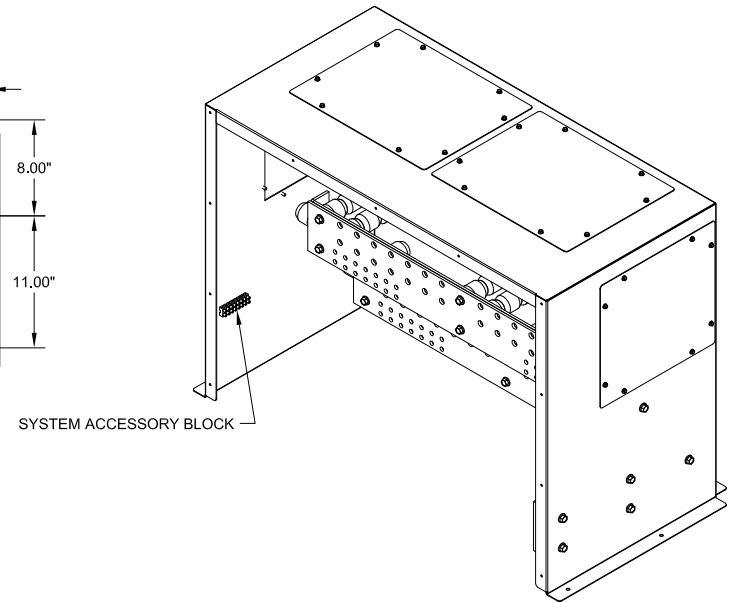
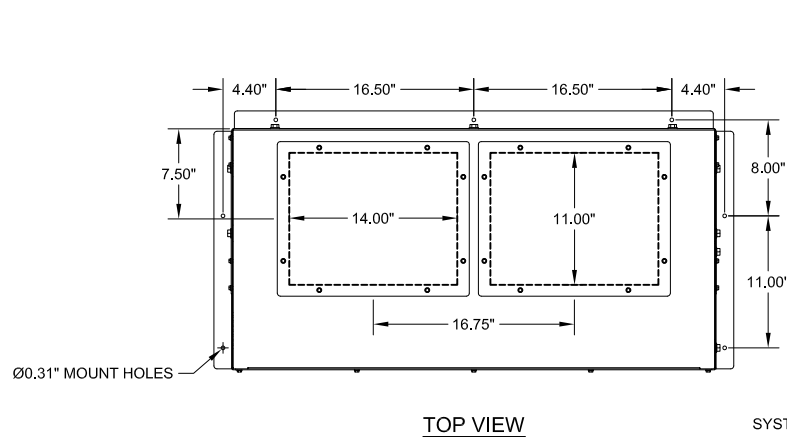


NOTES:

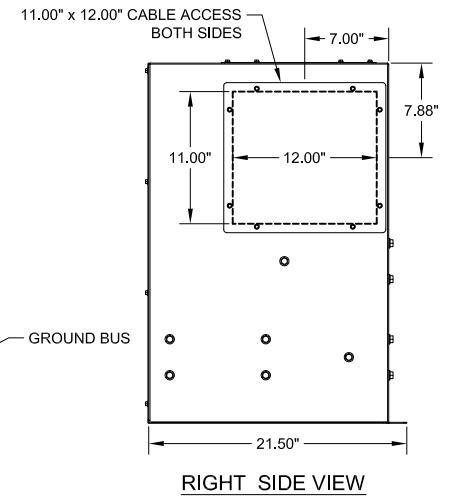
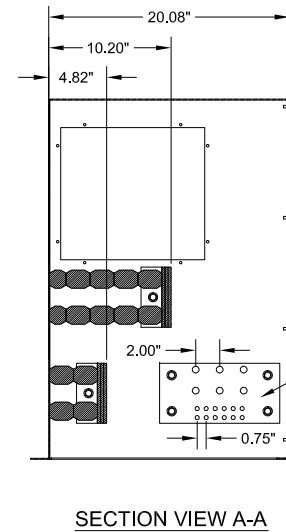
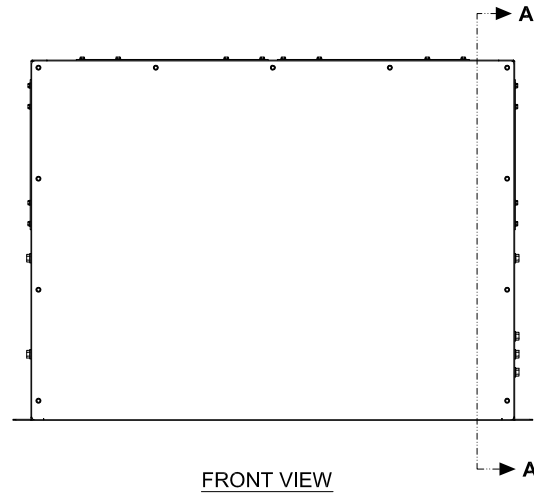
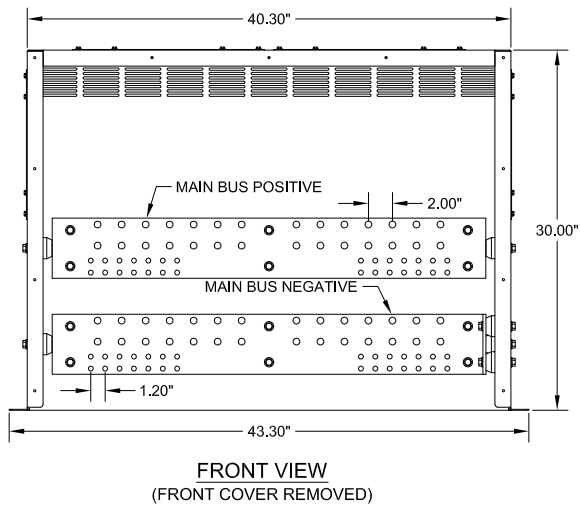
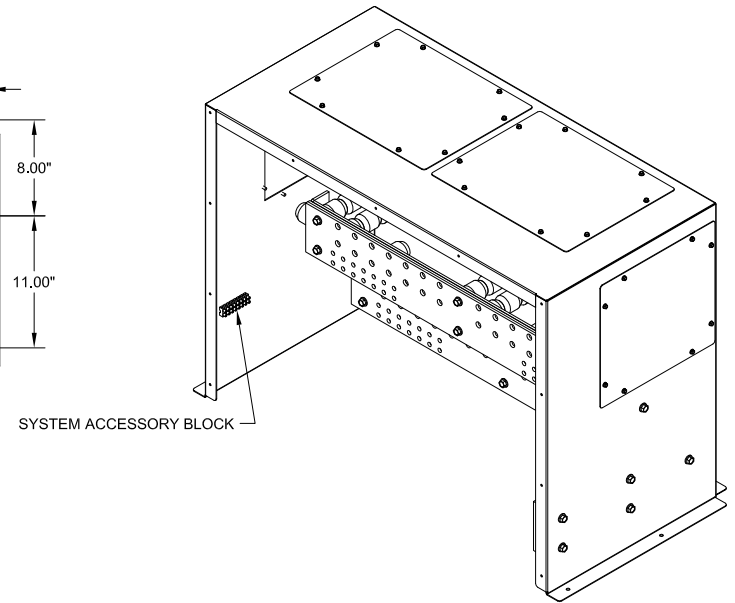
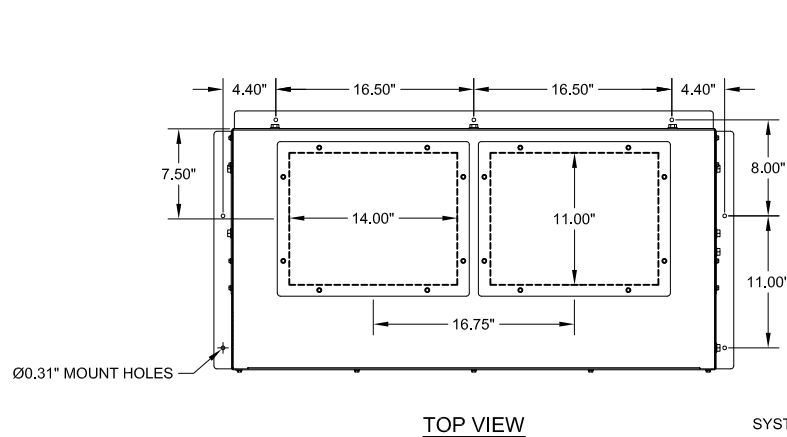
- 1. APPROXIMATE WEIGHT: 145 LBS.
- 2. MAIN LANDING BUS OUTPUT (TO UPS) IS PROVIDED WITH (14) TWO HOLE LANDINGS PER BUS ON 1-3/4" CENTERS TO ACCEPT Ø1/2" BOLTS.
- 3. MAIN LANDING BUS INPUT (FROM BATTERY CABINETS) IS PROVIDED WITH (14) TWO HOLE LANDINGS PER BUS ON 1" CENTERS TO ACCEPT Ø3/8" BOLTS.
- 4. MAIN LANDING BUS CURRENT CAPACITY IS 1500 AMPS.
- 5. GROUND BUS OUTPUT (TO MAIN GROUND) IS PROVIDED WITH (3) TWO HOLE LANDINGS ON 1-3/4" CENTERS TO ACCEPT Ø1/2" BOLTS.
- 6. GROUND BUS INPUT (FROM BATTERY CABINETS) IS PROVIDED WITH (6) TWO HOLE LANDINGS ON 1" CENTERS TO ACCEPT Ø3/8" BOLTS.
- 7. ALL TWO HOLE LANDINGS ARE CAPABLE OF ACCEPTING UP TO (2) TWO HOLE LUGS IN BACK TO BACK CONFIGURATION.
- 8. SYSTEM ACCESSORY BLOCK IS UL RECOGNIZED, 600V RATED.

95402-15			
UBC64 & UBC75 LANDING BOX			
1500A CONFIGURATION			
DIMENSIONS ARE IN INCHES	INITIALS	DATE	THE INFORMATION CONTAINED IN THIS DRAWING IS THE SOLE PROPERTY OF C&C POWER, INC. ANY REPRODUCTION WITHOUT THE WRITTEN CONSENT OF C&C POWER, INC IS PROHIBITED.
TOLERANCES:	DRAWN	JRL	
DECIMALS: .XX ±.13 .XXX ±.062	ANGLES: ±1"	CHECKED	
MATERIAL: ...	CH	2/10/2010	
FINISH: ...			
CAD GENERATED DRAWING DO NOT MANUALLY UPDATE			
SCALE: ...	SHEET	REV: 1	1
NTS	A	1	SHEET 1 OF 1
			<b>C&amp;C POWER</b> ENGINEERED POWER PRODUCTS 949 N. Larch Ave. - Elmhurst, IL 60126 © 2010 C&C POWER, INC. ALL RIGHTS RESERVED



- NOTES:
1. APPROXIMATE WEIGHT: 172 LBS.
  1. MAIN LANDING BUS OUTPUT (TO UPS) IS PROVIDED WITH (14) TWO HOLE LANDINGS PER BUS ON 1-3/4" CENTERS TO ACCEPT Ø1/2" BOLTS.
  2. MAIN LANDING BUS INPUT (FROM BATTERY CABINETS) IS PROVIDED WITH (14) TWO HOLE LANDINGS PER BUS ON 1" CENTERS TO ACCEPT Ø3/8" BOLTS.
  3. MAIN LANDING BUS CURRENT CAPACITY IS 3000 AMPS.
  4. GROUND BUS OUTPUT (TO MAIN GROUND) IS PROVIDED WITH (3) TWO HOLE LANDINGS ON 1-3/4" CENTERS TO ACCEPT Ø1/2" BOLTS.
  5. GROUND BUS INPUT (FROM BATTERY CABINETS) IS PROVIDED WITH (6) TWO HOLE LANDINGS ON 1" CENTERS TO ACCEPT Ø3/8" BOLTS.
  6. ALL TWO HOLE LANDINGS ARE CAPABLE OF ACCEPTING UP TO (2) TWO HOLE LUGS IN BACK TO BACK CONFIGURATION.
  7. SYSTEM ACCESSORY BLOCK IS UL RECOGNIZED, 600V RATED.

95402-30			
UBC64 & UBC75 LANDING BOX			
3000A CONFIGURATION			
DIMENSIONS ARE IN INCHES	INITIALS	DATE	THE INFORMATION CONTAINED IN THIS DRAWING IS THE SOLE PROPERTY OF C&C POWER, INC. ANY REPRODUCTION WITHOUT THE WRITTEN CONSENT OF C&C POWER, INC IS PROHIBITED.
TOLERANCES:	DRAWN	JRL	
DECIMALS: .XX ±.13 .XXX ±.062	ANGLES: ±1°	CHECKED	
MATERIAL: ...	CH	2/10/2010	
FINISH: ...			
CAD GENERATED DRAWING DO NOT MANUALLY UPDATE			
SCALE: ...	SHEET	REV: 1	1
NTS	A	1	SHEET 1 OF 1
			<b>C&amp;C POWER</b> ENGINEERED POWER PRODUCTS 949 N. Larch Ave. - Elmhurst, IL 60126 © 2010 C&C POWER, INC. ALL RIGHTS RESERVED



- NOTES:
- APPROXIMATE WEIGHT: 200 LBS.
  - MAIN LANDING BUS OUTPUT (TO UPS) IS PROVIDED WITH (14) TWO HOLE LANDINGS PER BUS ON 1-3/4" CENTERS TO ACCEPT Ø1/2" BOLTS.
  - MAIN LANDING BUS INPUT (FROM BATTERY CABINETS) IS PROVIDED WITH (14) TWO HOLE LANDINGS PER BUS ON 1" CENTERS TO ACCEPT Ø3/8" BOLTS.
  - MAIN LANDING BUS CURRENT CAPACITY IS 4500 AMPS.
  - GROUND BUS OUTPUT (TO MAIN GROUND) IS PROVIDED WITH (3) TWO HOLE LANDINGS ON 1-3/4" CENTERS TO ACCEPT Ø1/2" BOLTS.
  - GROUND BUS INPUT (FROM BATTERY CABINETS) IS PROVIDED WITH (6) TWO HOLE LANDINGS ON 1" CENTERS TO ACCEPT Ø3/8" BOLTS.
  - ALL TWO HOLE LANDINGS ARE CAPABLE OF ACCEPTING UP TO (2) TWO HOLE LUGS IN BACK TO BACK CONFIGURATION.
  - SYSTEM ACCESSORY BLOCK IS UL RECOGNIZED, 600V RATED.

95402-45			
UBC64 & UBC75 LANDING BOX			
4500A CONFIGURATION			
DIMENSIONS ARE IN INCHES	INITIALS	DATE	THE INFORMATION CONTAINED IN THIS DRAWING IS THE SOLE PROPERTY OF C&C POWER, INC. ANY REPRODUCTION WITHOUT THE WRITTEN CONSENT OF C&C POWER, INC IS PROHIBITED.
TOLERANCES:	DRAWN	JRL	
DECIMALS: .XX ±.13 .XXX ±.062	ANGLES: ±1°	CHECKED	
MATERIAL: ...	2/10/2010		
FINISH: ...	CAD GENERATED DRAWING DO NOT MANUALLY UPDATE		
SCALE: SEE: A	REV: 1	SHEET 1 OF 1	

**C&C POWER**  
ENGINEERED POWER PRODUCTS  
949 N. Larch Ave. - Elmhurst, IL 60126  
© 2010 C&C POWER, INC.  
ALL RIGHTS RESERVED