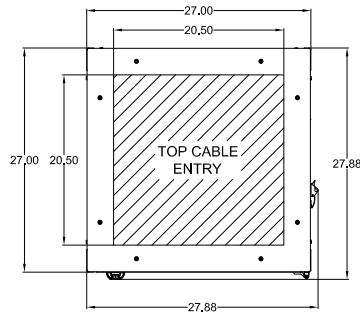
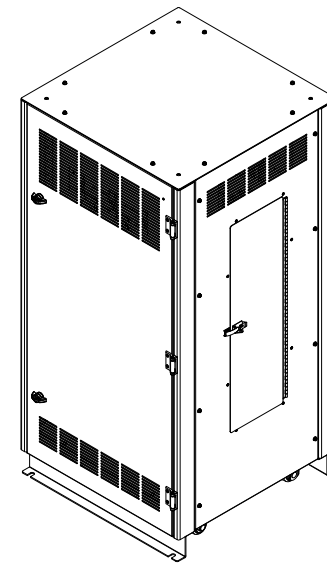


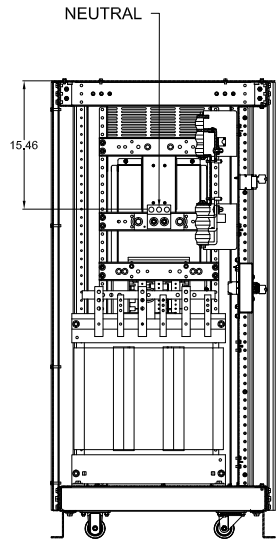
ISOMETRIC VIEW  
(DOORS REMOVED)



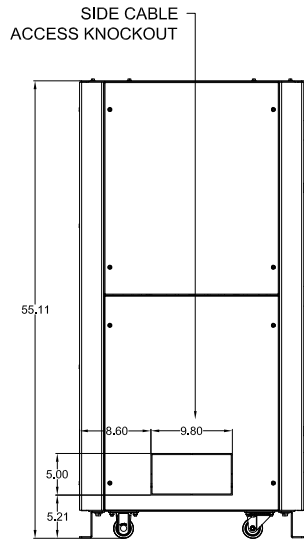
TOP VIEW



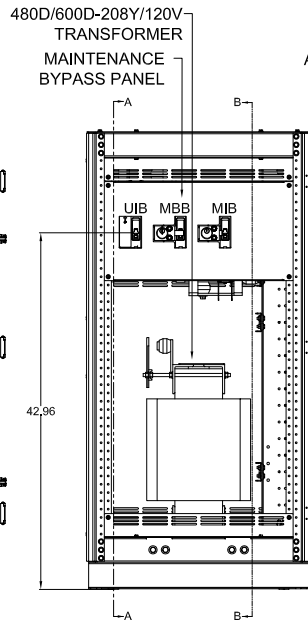
ISOMETRIC VIEW



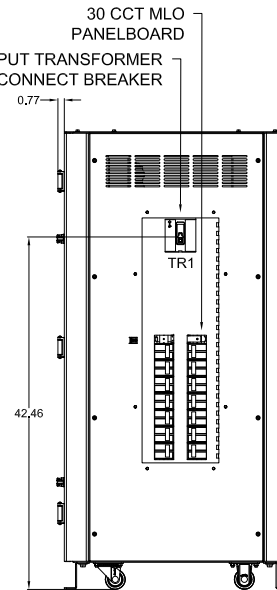
SECTION VIEW  
A - A



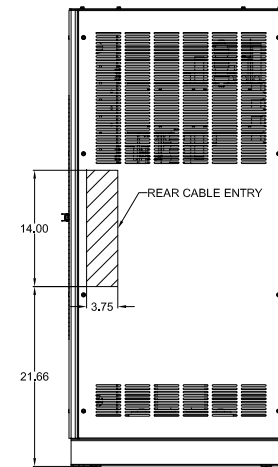
LEFT SIDE VIEW



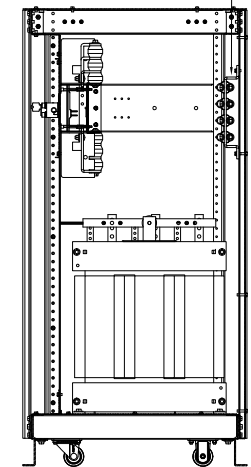
FRONT VIEW  
(DOOR & DEADFRONTS REMOVED)



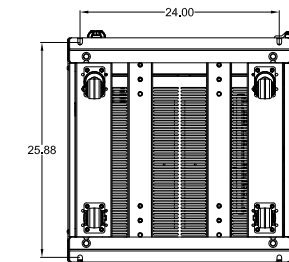
RIGHT SIDE VIEW  
(PANELBOARD DOOR REMOVED)



REAR VIEW



SECTION VIEW  
B - B



BOTTOM VIEW

NOTES:

APPROXIMATE WEIGHT: 830 LBS.

1. ASSEMBLY IS UL LISTED TO UL 891.
2. NEMA 1 TYPE ENCLOSURE.
3. THE CABINET IS CONSTRUCTED FROM GALVANIZED STEEL.
4. FINISH IS POWDER COAT ON ALL EXTERNAL AND VISIBLE SURFACES, INTERIOR PANELS AND MOUNT BRACKETS ARE GALVANIZED FINISH.
5. THE UNIT IS DESIGNED TO MEET THE 2009 EDITION OF THE INTERNATIONAL BUILDING CODE (IBC) AND THE 2010 EDITION OF THE CALIFORNIA BUILDING CODE (CBC) TO MEET DESIGN CATEGORY F, SS = 2.0 AND IMPORTANCE FACTOR 1.5.
6. TOP AND REAR CABLE ENTRY ONLY.
7. THE UNIT MUST BE MOUNTED ON THE RIGHT SIDE OF UPS.
8. A MINIMUM CLEARANCE OF 36" IS REQUIRED AT THE FRONT AND RIGHT SIDE OF THE CABINET.

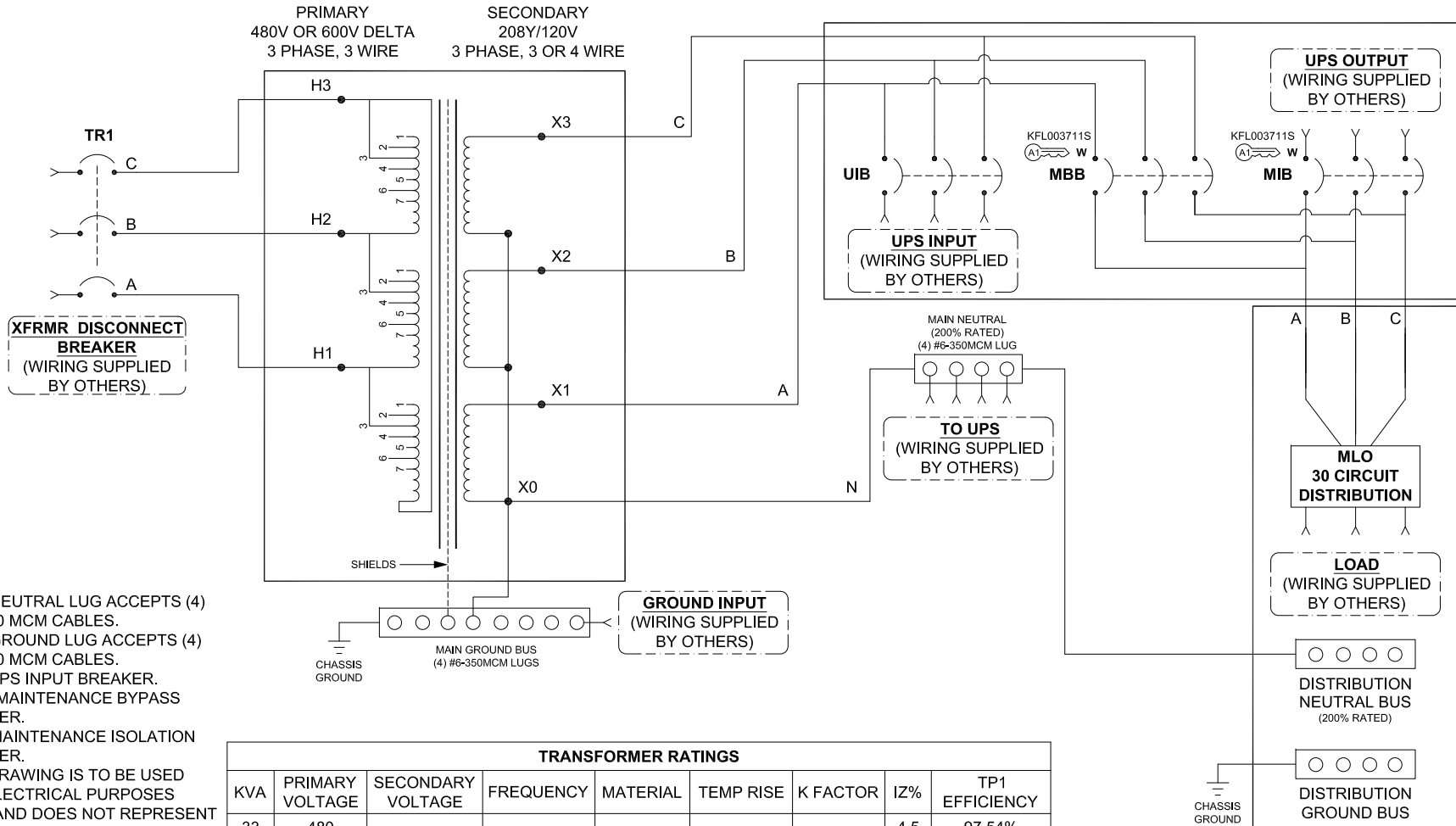
90840 SERIES XBD WITH AC INPUT XFRMR AND 30 CCT PANELBOARD			
125A-200A, 120V/208V, 3PH/4W 3 BREAKER MAINTENANCE BYPASS			
INTERLOCK CONFIGURATION 2			
DIMENSIONS ARE IN INCHES	TOLERANCES:	INITIALS	DATE
DECIMALS: .XX ±.13	ANGLES: ±1°	DRAWN PC	8/6/2012
.XXX ±.062		CHECKED CH	8/9/2012
MATERIAL: SEE NOTES SHEET 1		THE INFORMATION CONTAINED IN THIS DRAWING IS THE SOLE PROPERTY OF C&C POWER, INC. ANY REPRODUCTION WITHOUT THE WRITTEN CONSENT OF C&C POWER, INC IS PROHIBITED.	
FINISH: SEE NOTES SHEET 1		 WWW.CCPOWER.COM	
CAD GENERATED DRAWING DO NOT MANUALLY UPDATE			
SCALE: SEE NOTES SHEET 1	REV: 2	SHEET 1 OF 2	
		© 2012 C&C POWER, INC. ALL RIGHTS RESERVED	

**TRANSFORMER DISCONNECT CIRCUIT BREAKER SUMMARY (TR1)**

XFRMR KVA	INPUT VOLTAGE	BREAKER MODEL	TRIP	AIC	WIRE RANGE
33	480	HFD3050	50A	65K @ 480VAC	(1) 14 - 1/0
	600	FDB3040	40A	10K @ 600VAC	
56	480	HFD3090	90A	65K @ 480VAC	
	600	FDB3070	70A	10K @ 600VAC	

**MAINTENANCE BYPASS CIRCUIT BREAKER SUMMARY (MBB, MIB & UIB)**

XFRMR KVA	BREAKER MODEL	TRIP	AIC	WIRE RANGE
33	EDB3125	125A	22K @ 240VAC	(1) 4 - 4/0
56	EDB3200	200A		



**NOTES:**

1. MAIN NEUTRAL LUG ACCEPTS (4) #6 - 350 MCM CABLES.
2. MAIN GROUND LUG ACCEPTS (4) #6 - 350 MCM CABLES.
3. "UIB" UPS INPUT BREAKER.
4. "MBB" MAINTENANCE BYPASS BREAKER.
5. "MIB" MAINTENANCE ISOLATION BREAKER.
6. THIS DRAWING IS TO BE USED FOR ELECTRICAL PURPOSES ONLY AND DOES NOT REPRESENT THE ACTUAL MECHANICAL LAYOUT OF THE EQUIPMENT.

**KIRK KEY NOTES:**

1. THE "E" OR "W" NEXT TO THE INTERLOCK INDICATES THE POSITION OF THE INTERLOCK BOLT WHEN THE KEY IS REMOVABLE. "E" = EXTENDED AND "W" = WITHDRAWN.
2. THE KEY OR KEYS NEXT TO THE INTERLOCK INDICATES THE KEY NUMBER THAT FUNCTIONS WITH THE INTERLOCK.

**TRANSFORMER RATINGS**

KVA	PRIMARY VOLTAGE	SECONDARY VOLTAGE	FREQUENCY	MATERIAL	TEMP RISE	K FACTOR	I <sub>Z</sub> %	TP1 EFFICIENCY
33	480	208Y/120	60 HZ	AL	150°C	K0	4.5	97.54%
56	480						3.4	97.81%
		600					3.5	97.81%

**HIGH VOLTAGE: LINES ON H1, H2, H3**

XFRMR PRIMARY (V)	TAP CONFIGURATION							
	CONNECT	1	2	3	4	5	6	7
480	VOLTS	504	492	480	468	456	444	432
600		630	615	600	585	570	555	540

**LOW VOLTAGE: LINES ON X1, X2, X3**

LINE - LINE	LINE - NEUTRAL
208 V	120 V

**90840 SERIES XBD WITH AC INPUT XFRMR AND 30 CCT PANELBOARD**  
**125A-200A, 120V/208V, 3PH/4W 3 BREAKER MAINTENANCE BYPASS**  
**INTERLOCK CONFIGURATION 2**

DIMENSIONS ARE IN INCHES	INITIALS	DATE	THE INFORMATION CONTAINED IN THIS DRAWING IS THE SOLE PROPERTY OF C&C POWER, INC. ANY REPRODUCTION WITHOUT THE WRITTEN CONSENT OF C&C POWER, INC IS PROHIBITED.
TOLERANCES:	DRAWN	8/6/2012	
DECIMALS: .XX ±.13 .XXX ±.062	PC CHECKED CH	8/9/2012	

MATERIAL: SEE NOTES SHEET 1  
 FINISH: SEE NOTES SHEET 1  
 CAD GENERATED DRAWING DO NOT MANUALLY UPDATE  
 SCALE: SEE NOTES SHEET 1  
 SHEET 2 OF 2

**C&C POWER**  
**ENGINEERED POWER PRODUCTS**  
 WWW.CCPOWER.COM  
 © 2012 C&C POWER, INC.  
 ALL RIGHTS RESERVED

DRAWING # 90840-900-208Y-C2-DIST-SD01-2 REV 2