

UPS Wall Mount Battery Disconnects

91810 Series



- Circuit breaker protection from 30 to 400 amps
- Multiple circuit breaker accessory options available
- Heavy duty cold rolled steel construction
- Powder coat finish
- Listed to UL Standards and CSA certified

C&C Power's Wall Mount UPS Battery Disconnects isolate the battery string for added safety and ease of maintenance. C&C Power's 91810 Series offers a full line of circuit breaker UPS battery disconnects available from 30 to 400 amps.

These wall mount disconnects are available with your choice of breaker accessories including aux contacts, bell alarm contacts, shunt trip, and under voltage trip. C&C Power's battery disconnects are listed to UL Standards and are CSA certified.

Circuit Breaker Accessory Options:

- **Auxiliary switch:** For applications requiring remote on or off indication. Each auxiliary switch comprises of an open, closed, and common contact.
- **Bell alarm:** The bell alarm switch is closed when the circuit breaker has been tripped due to short circuit, shunt trip, or under voltage trip. The bell alarm switch is automatically opened when the circuit breaker is reset.
- **Shunt trip:** Circuit breakers may be tripped from a remote location with the use of a shunt trip. Shunt trips can be activated by applying a specified voltage through the shunt trip contacts which automatically cause the circuit breaker to trip.
- **Under voltage (UV) trip:** The UV trip monitors a voltage across a set of contacts. If the voltage drops to a value below 35% of the specified coil rating, the under voltage trip device trips the circuit breaker. The operation is instantaneous and the circuit breaker cannot be reset until the voltage returns to at least 85% of the specified coil voltage.

Part Number Configuration

91810 - 6 0400 - 1 1 - 240 - 000

1

2

3

4

5

6

7

1. Battery Disconnect Enclosure

91810 = Wall Mount, 14"W x 28"H x 12"D

2. Breaker Maximum Voltage Rating *

2 = 250 VDC
6 = 600 VDC

3. Breaker Ampere Size

0030, 0040, 0050, 0060, 0070, 0080, 0090,
0100, 0125, 0150, 0175, 0200, 0225, 0250,
0300, 0350, 0400

4. Auxiliary Switch Contacts ***

0 = No contacts
1 = 1 set of contacts
2 = 2 sets of contacts

5. Bell Alarm Contacts **

0 = No contacts
1 = 1 set of contacts
2 = 2 sets of contacts

6. UV Trip **

000 = No UV Trip
120 = 120 VAC UV Trip
208 = 208 VAC UV Trip
240 = 240 VAC UV Trip
277 = 277 VAC UV Trip
480 = 480 VAC UV Trip
600 = 600 VAC UV Trip
24D = 24 VDC UV Trip
48D = 48 VDC UV Trip
125 = 125 VDC UV Trip
250 = 250 VDC UV Trip

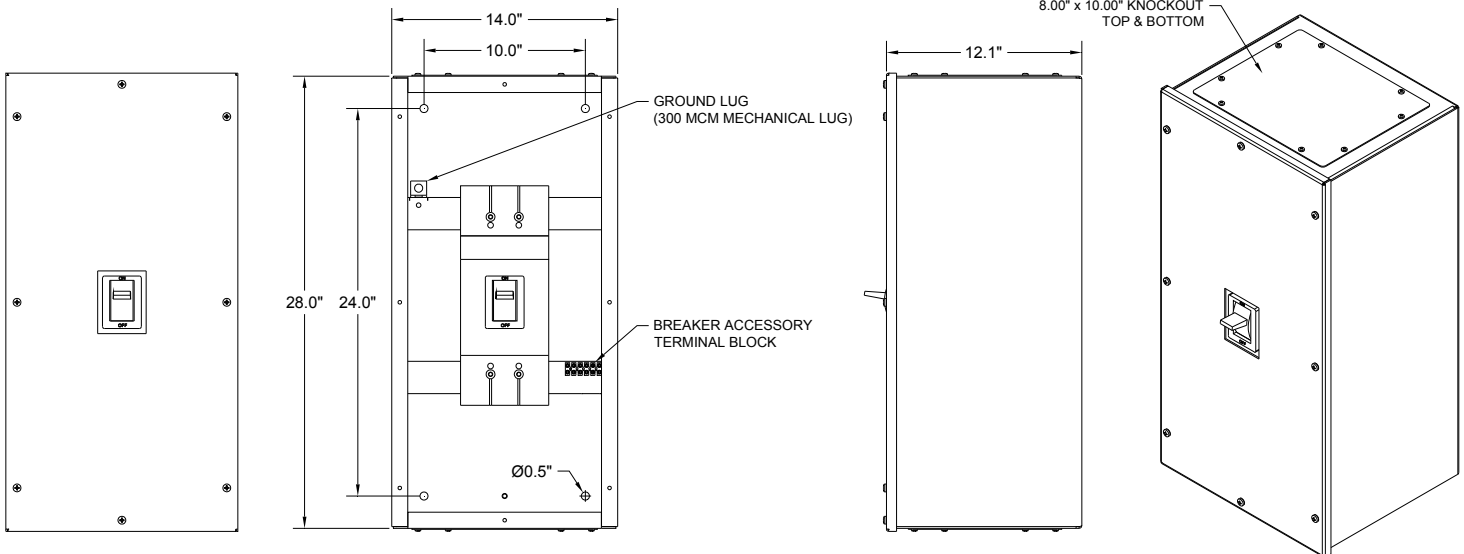
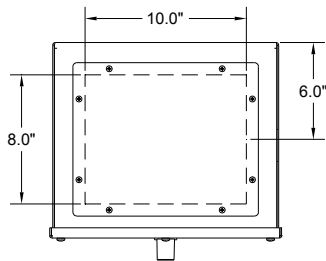
7. Shunt Trip **

000 = No Shunt Trip
24A = 24 VAC Shunt Trip
48A = 48 VAC Shunt Trip
120 = 120 VAC Shunt Trip
208 = 208 VAC Shunt Trip
240 = 240 VAC Shunt Trip
277 = 277 VAC Shunt Trip
480 = 480 VAC Shunt Trip
600 = 600 VAC Shunt Trip
12D = 12 VDC Shunt Trip
24D = 24 VDC Shunt Trip
48D = 48 VDC Shunt Trip
125 = 125 VDC Shunt Trip
250 = 250 VDC Shunt Trip

*Breaker voltage based on max UPS float voltage, not nominal DC bus voltage.

** Maximum of 2 sets of contacts and one trip option can be used on a single disconnect.

91810 Product Drawing



715-00074 R02