

# UBC40

## Front Access Battery Cabinet



- Front access battery design for easy battery access
- Fully assembled, tested, and listed to UL 1778
- Breaker and fuse options for single and multiple string applications
- Hinged locking front doors for secure easy access
- Patent Pending tiered shelf design simplifies battery maintenance
- Flexible bus bars reduce stress on battery connections
- Air gap between batteries for longer life and better cooling
- Welded heavy gauge steel construction
- Available in multiple powder coat finishes
- Compatible with battery monitoring solutions

C&C Power offers a full line of manufactured battery cabinets available in a wide range of sizes and colors to meet your specific needs.

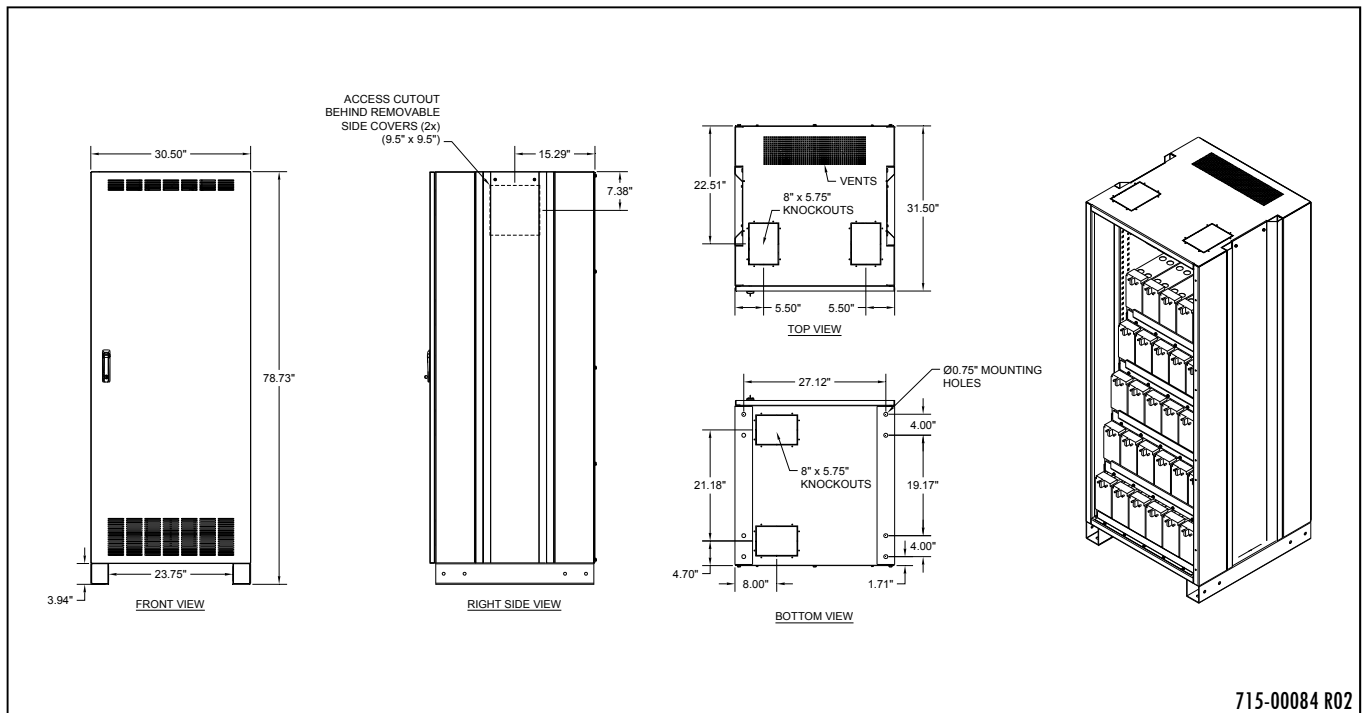
The UBC40 is part of C&C Power's exclusive new patent pending front access battery cabinet line. The UBC series of cabinets offer a revolutionary new patent pending tiered shelf design. This unique feature of the UBC cabinet series allows for effortless system maintenance and installations.

| Maximum Battery Capacity |       |
|--------------------------|-------|
| Battery Type             | UBC40 |
| 100AH Front Access       | 30    |
| 150AH Front Access       | 25    |

| Dimensions |  |        |      |
|------------|--|--------|------|
| UBC40      |  | inches | mm   |
| Height:    |  | 78.7   | 1999 |
| Width:     |  | 30.5   | 775  |
| Depth:     |  | 31.5   | 800  |



| UBC40 Cabinet Run Time Table |             |         |               |          |          |          |     |
|------------------------------|-------------|---------|---------------|----------|----------|----------|-----|
| Battery Model                | Bus Voltage | KWB     | Runtime (min) |          |          |          |     |
|                              |             |         | 1-String      | 2-String | 3-String | 4-String |     |
| 12AVR100-3ET                 | 288VDC      | 15      | 81            | 192      | 311      | 443      |     |
|                              |             | 30      | 29            | 81       | 139      | 192      |     |
|                              |             | 50      | 13            | 42       | 70       | 103      |     |
|                              |             | 70      | 7             | 24       | 46       | 64       |     |
|                              | 360 VDC     | 70      | 11            | 33       | 59       | 87       |     |
|                              |             | 130     | 2.4           | 12       | 24       | 39       |     |
|                              |             | 190     | -             | 5.9      | 13       | 20       |     |
|                              |             | 260     | -             | 2.4      | 7.4      | 12       |     |
|                              |             | 480 VDC | 130           | 5.4      | 20       | 39       | 57  |
|                              |             |         | 290           | -        | 4.2      | 10       | 17  |
|                              |             |         | 480           | -        | -        | 3.3      | 6.8 |
|                              |             |         | 720           | -        | -        | -        | 2.0 |
| HR5500ET                     | 288 VDC     | 15      | 129           | 312      | 480+     | 480+     |     |
|                              |             | 30      | 61            | 129      | 218      | 312      |     |
|                              |             | 50      | 32            | 74       | 111      | 166      |     |
|                              |             | 70      | 18            | 52       | 79       | 105      |     |
|                              | 360 VDC     | 70      | 26            | 66       | 95       | 144      |     |
|                              |             | 130     | 8.2           | 30       | 53       | 72       |     |
|                              |             | 190     | -             | 16       | 31       | 46       |     |
|                              |             | 260     | -             | 8.2      | 18       | 30       |     |
|                              |             | 480 VDC | 130           | 15       | 44       | 72       | 89  |
|                              |             |         | 290           | -        | 12       | 25       | 39  |
|                              |             |         | 480           | -        | -        | 10       | 17  |
|                              |             |         | 720           | -        | -        | -        | 7.4 |



715-00084 R02