

90822 Series DC Raceway and Landing Cabinets

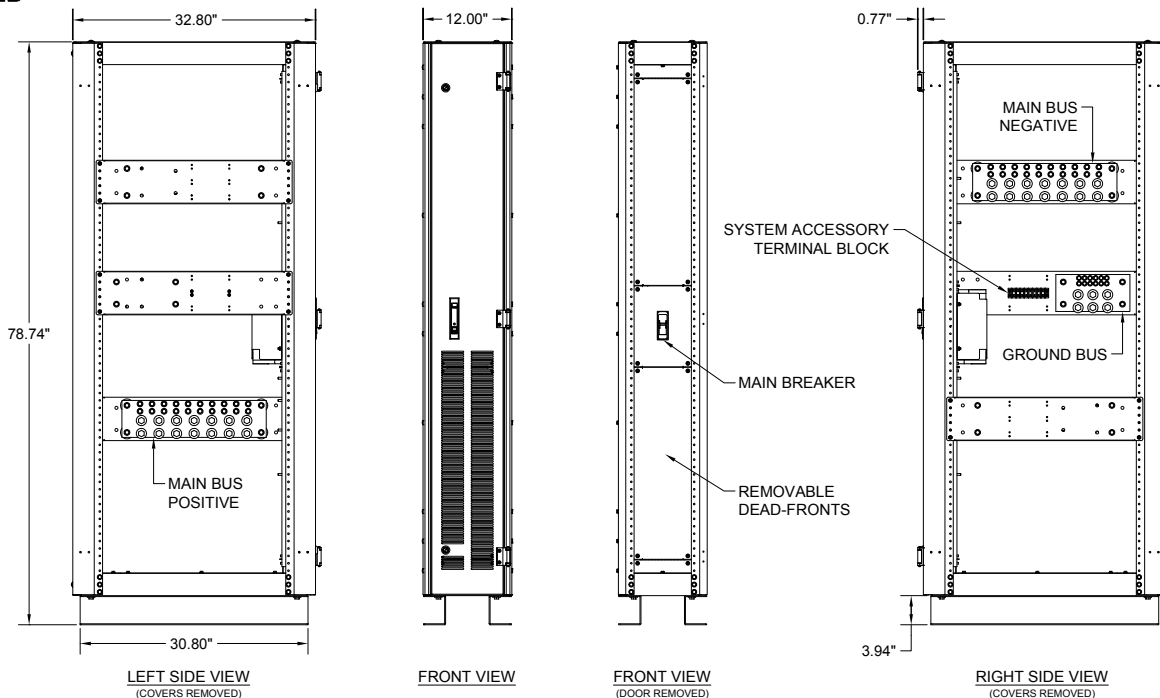
UPS Peripherals



- Multiple system configurations
- Main breaker or landing cabinet design
- Mounts to the side of the UPS
- 12 or 18 inch wide free standing design
- Compact design minimizes footprint
- Available in 1250 and 2500 amp ratings
- Breakers available from 15 to 600 amps

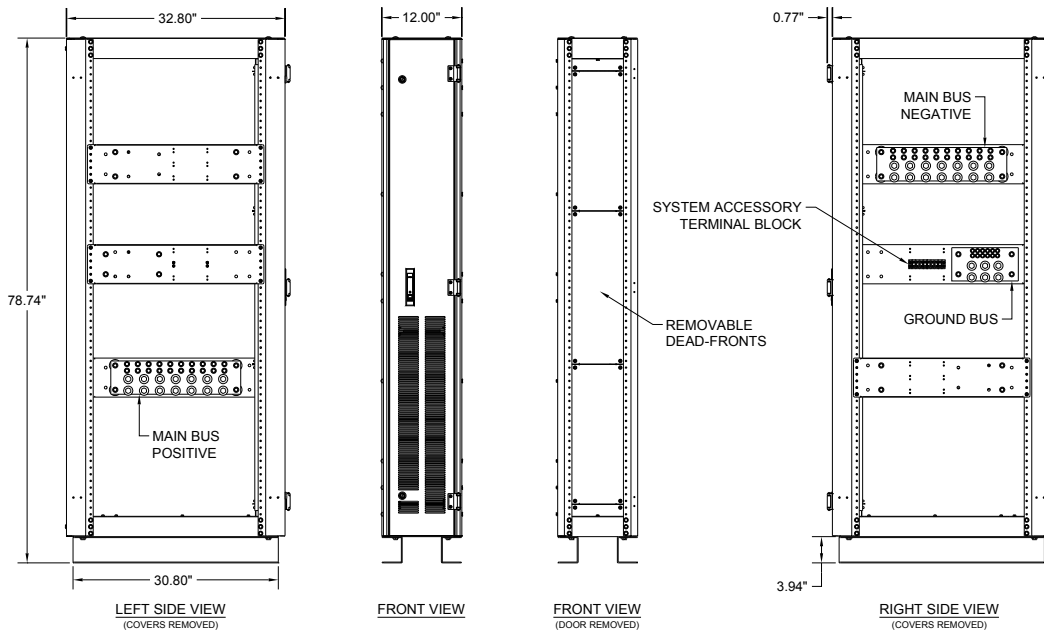
C&C Power offers DC Raceway and Landing Cabinets available in multiple configurations. The 90822 Series cabinets provide a convenient location to run cables from battery cabinet systems to the UPS.

90822-12B

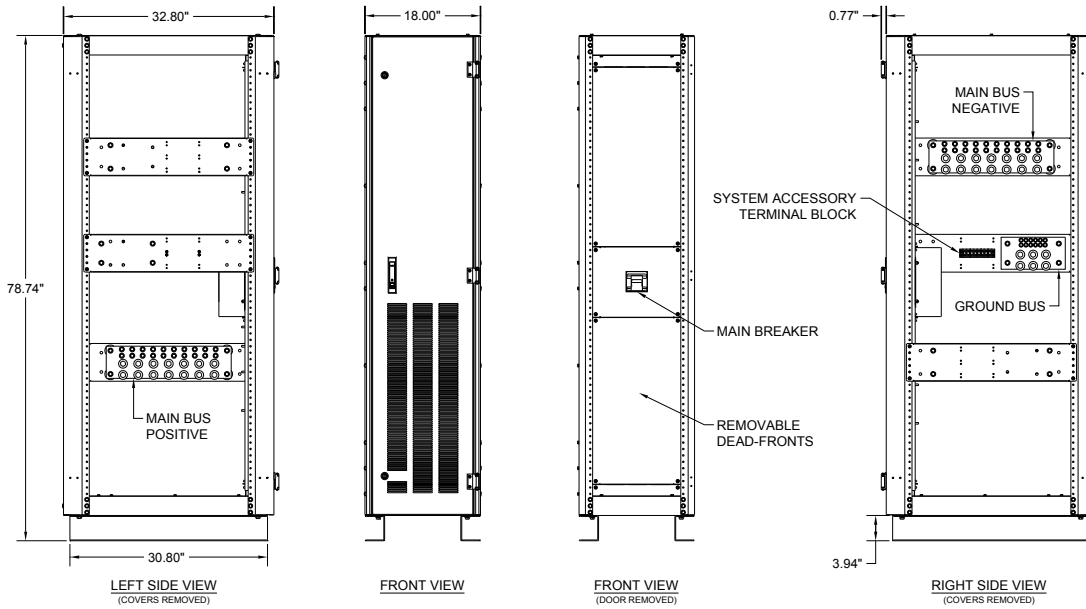


715-00097 R1

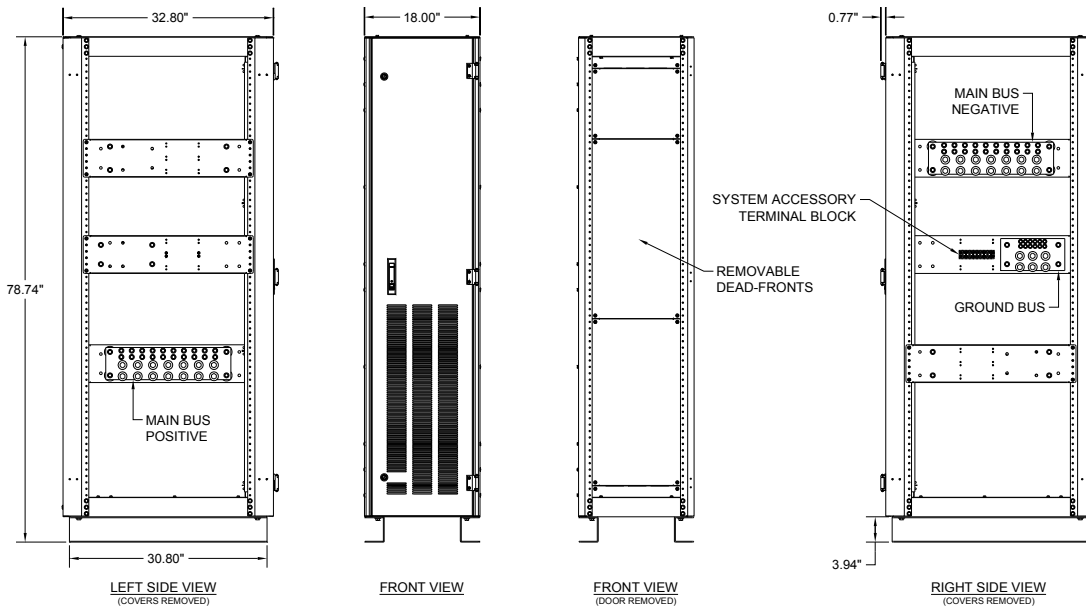
90822-12L



90822-18B



90822-18L



Part Number Configuration

90822-12 B - C BT - 1 - 400 1 1 H
1 2 3 4 5 6 7 8 9

1. Cabinet Size

90822-12 = 12" wide cabinet
90822-18 = 18" wide cabinet

2. Cabinet Type

B = Landing Cabinet with Breaker
L = Landing Cabinet (Cabinet with bus bars for battery positive, battery negative, & ground. Also includes terminal block for accessory wires.)
R = Raceway (Empty cabinet with no bus bars or circuit breaker.)

3. Customer Code

C&C Power specific customer code

4. Color Code

C&C Power specific color code

5. Bus Bar Rating (Amps) (Leave blank for cabinet type B and R)

1 = 1250 amps
2 = 2500 amp

6. Breaker Size (Amps) (Leave blank for cabinet type L and R)

015-400 (in cabinet size 90822-12)
500-600 (in cabinet size 90822-18)

7. AUX Contacts Option for Breakers (Leave blank for cabinet type L and R)

0,1,2 (if fuse if used in lieu of breaker choose 0)

8. Bell Option for Breakers (Leave blank for cabinet type L and R)

0,1,2 (if fuse if used in lieu of breaker choose 0)

9. UV or Shunt Trip Option for Breakers (Leave blank for cabinet type L and R)

A = No Trip Option
B = 120VAC UV Trip
C = 208VAC UV Trip
D = 240VAC UV Trip
E = 277VAC UV Trip
F = 480VAC UV Trip
G = 600VAC UV Trip
H = 24VDC UV Trip
J = 48VDC UV Trip
K = 125VDC UV Trip
L = 250VDC UV Trip
M = 24VAC Shunt Trip
N = 48VAC Shunt Trip
P = 120VAC Shunt Trip
Q = 208VAC Shunt Trip
R = 240VAC Shunt Trip
S = 277VAC Shunt Trip
T = 480VAC Shunt Trip
U = 600VAC Shunt Trip
V = 12VDC Shunt Trip
W = 24VDC Shunt Trip
X = 48VDC Shunt Trip
Y = 125VDC Shunt Trip
Z = 250VDC Shunt Trip